



# KHASH-ERDENE GANKHUYAG

CLTP 7 REPORT

# CONTENTS

- INTRODUCTION
- CANSAT DEVELOPMENT
- VIBRATION & THERMAL TEST
- PAPER ROCKET
- FIRST LAUNCH
- SECOND LAUNCH





## INTRODUCTION

- Self-introduction
- Version 6 of i-Cansat was introduced to the CLTP 7 members.
- Tools and Cansat kit was provided by the instructors.



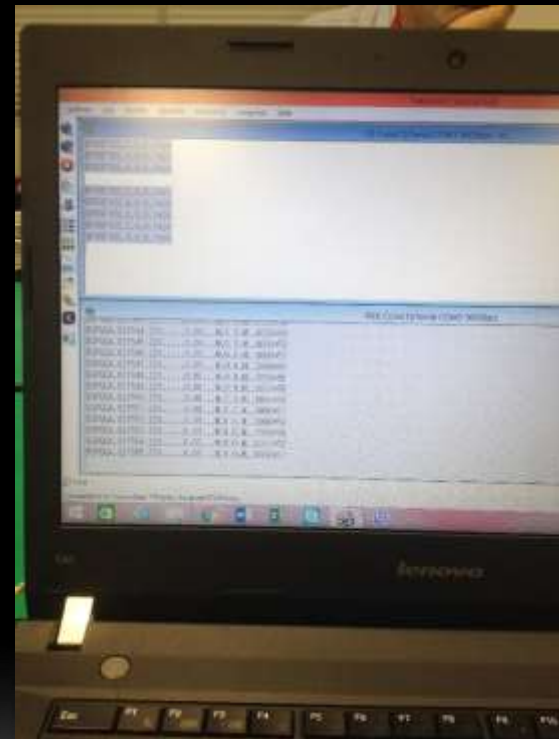


# CANSAT DEVELOPMENT

Assembling all the boards of cansat



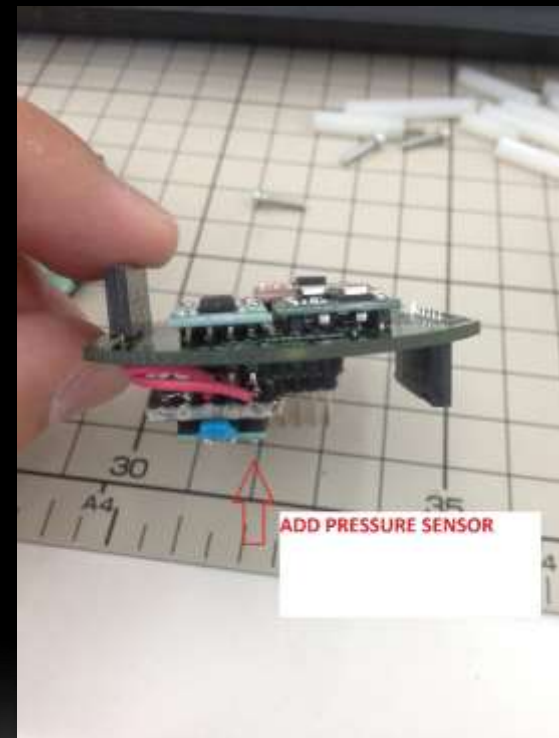
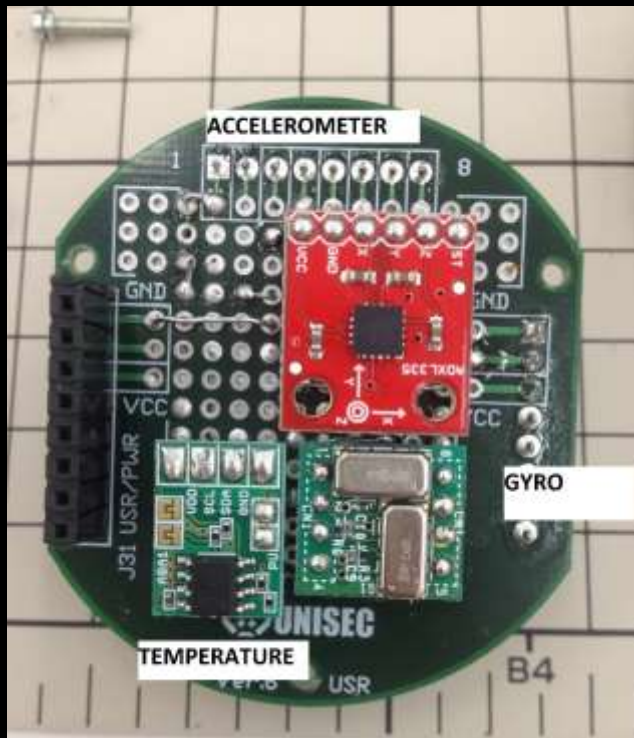
Software installed after then collect





# CANSAT DEVELOPMENT

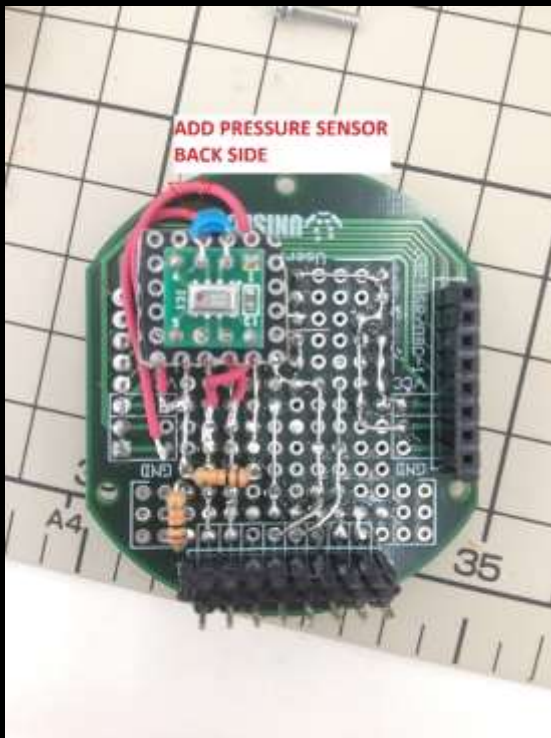
Total four sensor and camera





# CANSAT DEVELOPMENT

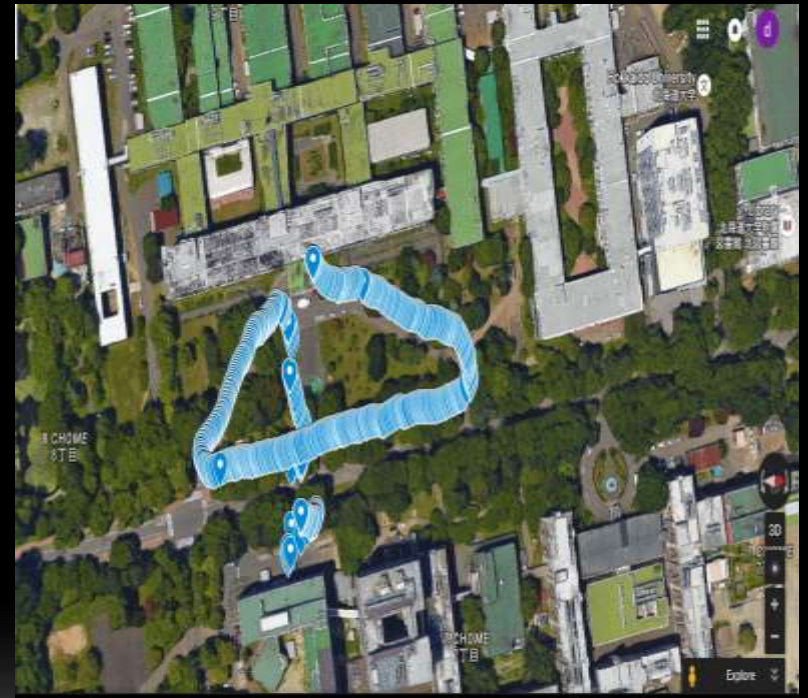
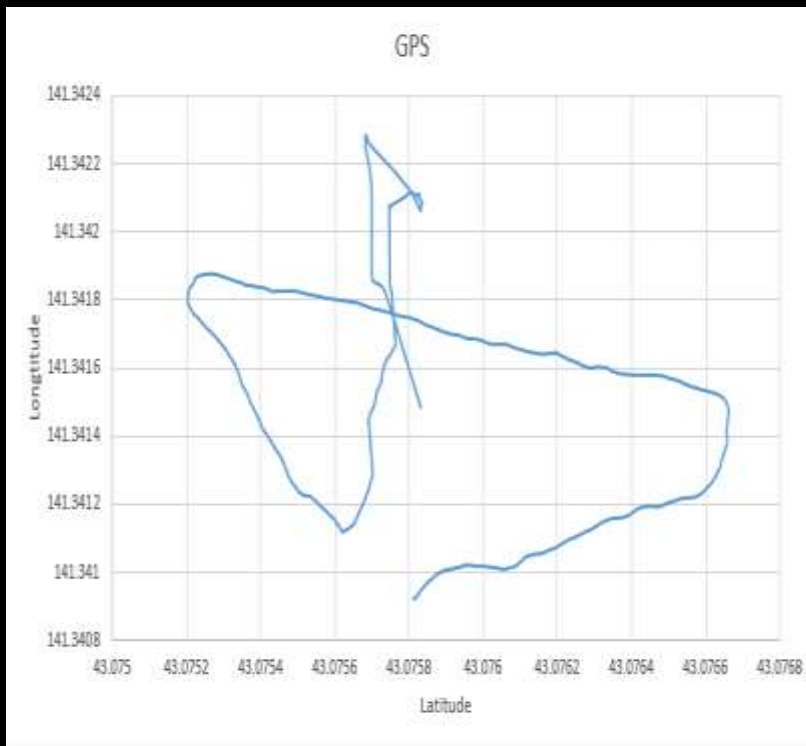
## ADD PRESSURE SENSOR



# CANSAT DEVELOPMENT



## Ground Test





# CANSAT DEVELOPMENT



Software installed after than camera test



# CANSAT DEVELOPMENT



Parachute deployment



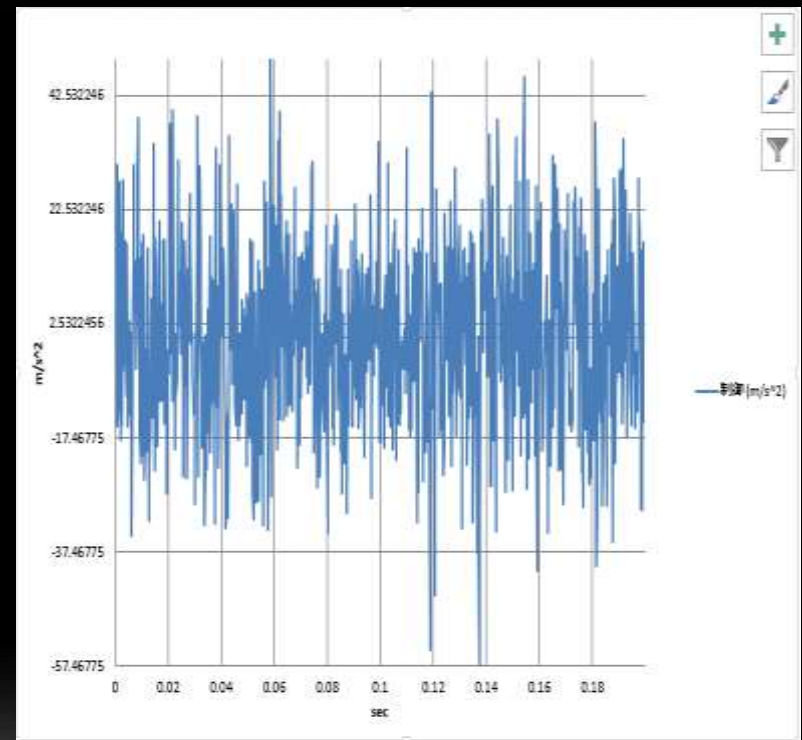
Make parachute after than picture





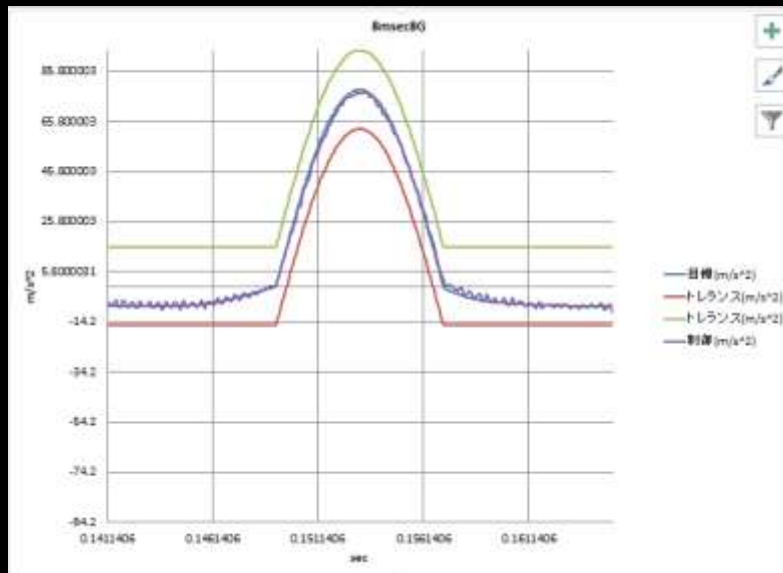
# VIBRATION & THERMAL TEST

## Vibration test





# VIBRATION TEST





# THERMAL TEST

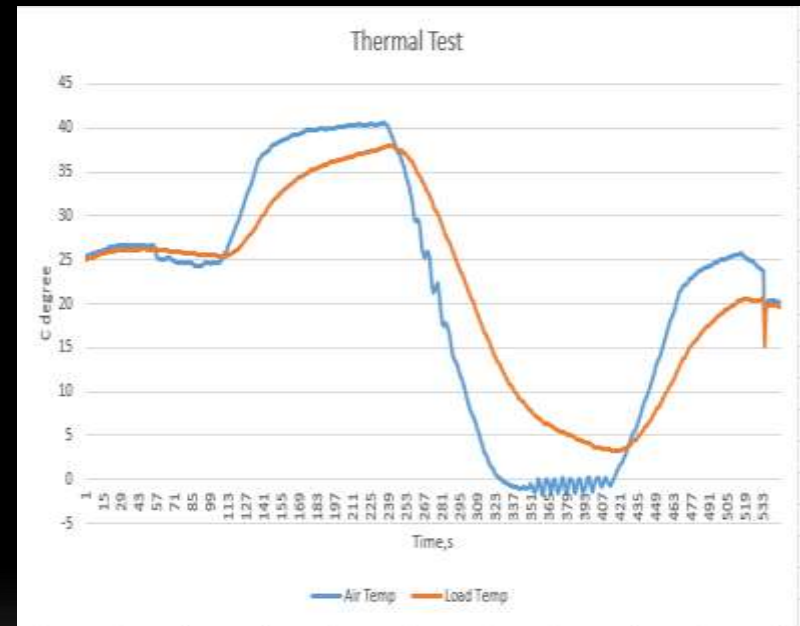




# THERMAL TEST

Good result

Air Temp	Load Temp
25.3	25
25.4	25.1
25.5	25.2
25.6	25.2
25.6	25.2
25.7	25.3
25.8	25.3
25.8	25.4
25.8	25.4
25.9	25.5
25.9	25.6
26	25.6
26	25.7
26.1	25.7
26.1	25.7
26.2	25.7
26.2	25.8
26.3	25.9
26.4	25.9
26.4	25.9
26.4	26
26.5	26
26.5	26
26.5	26.1
26.6	26.1



# PAPER ROCKET



# FIRST LAUNCH

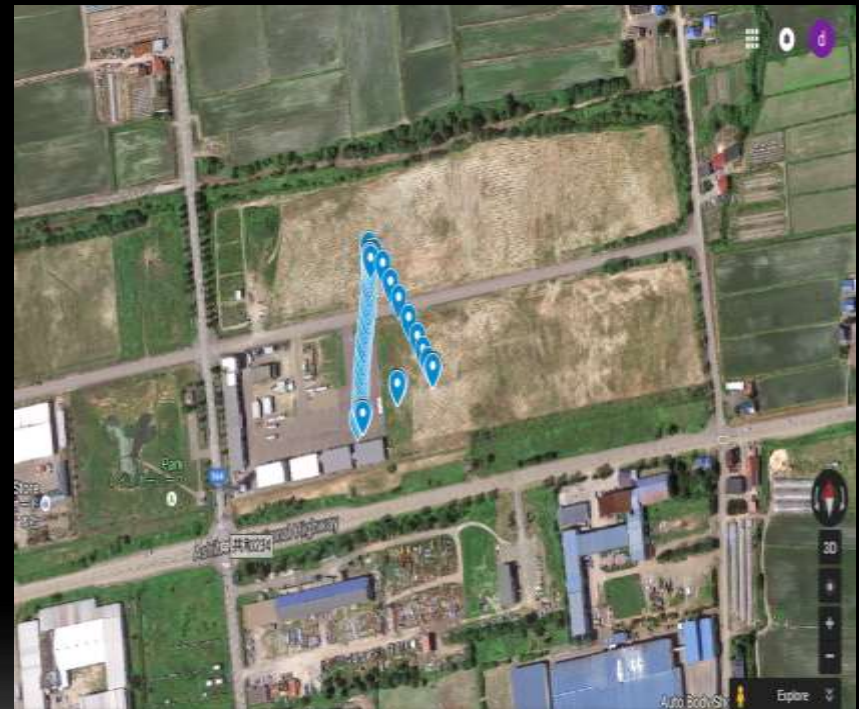
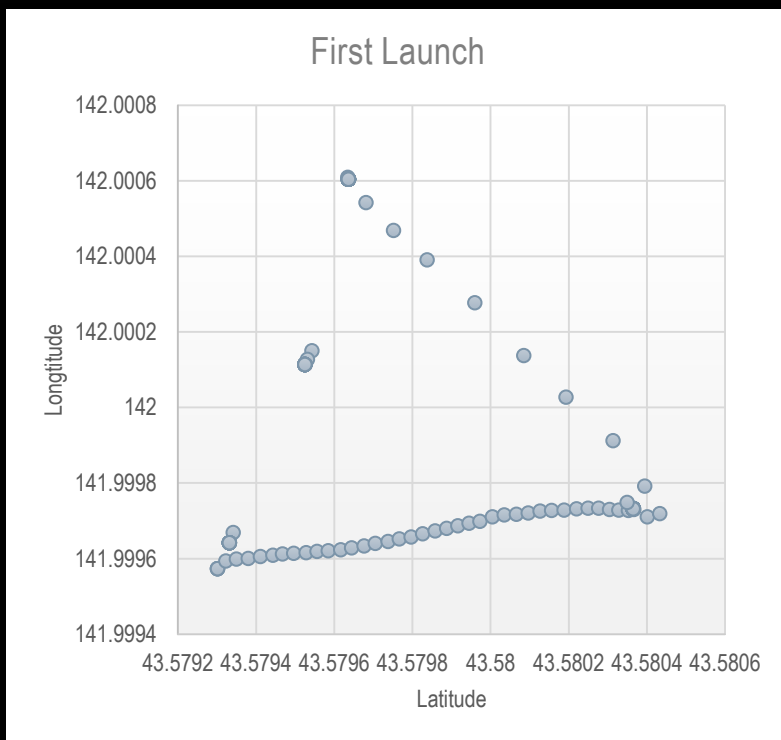






# FIRST LAUNCH

## GPS Data

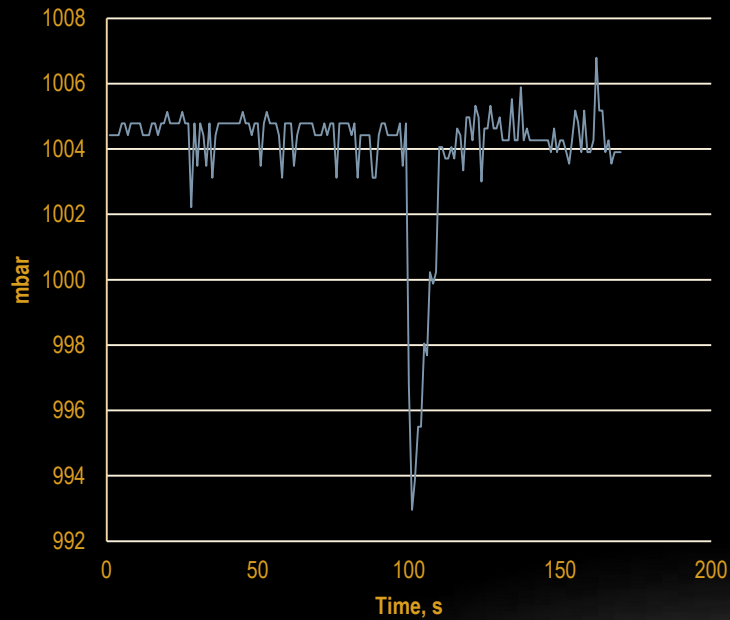




# FIRST LAUNCH

## PRESSURE

### PRESSURE



# FIRST LAUNCH

- Camera



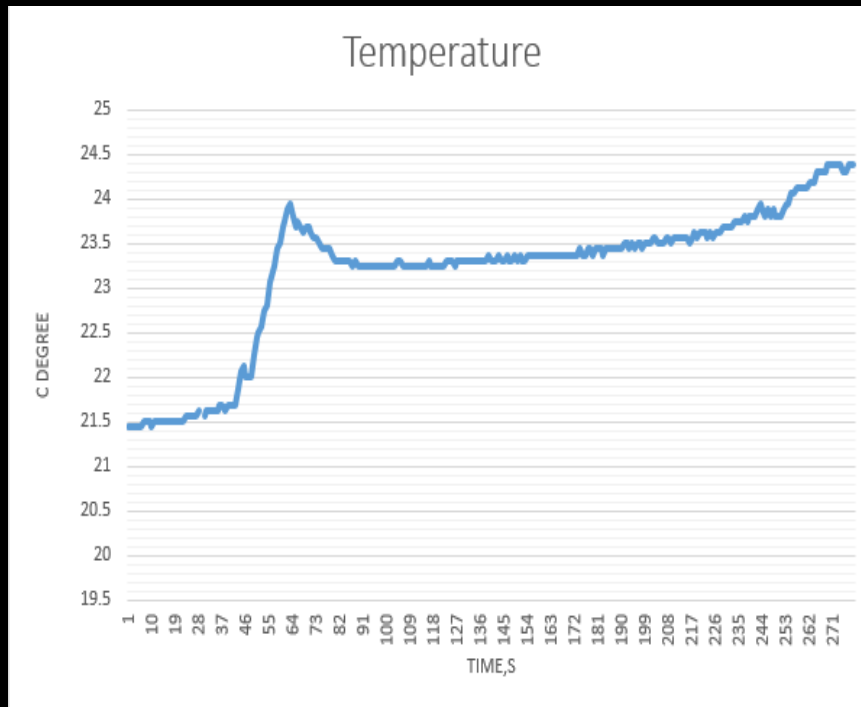
# SECOND LAUNCH





# SECOND LAUNCH

## Temperature characteristic



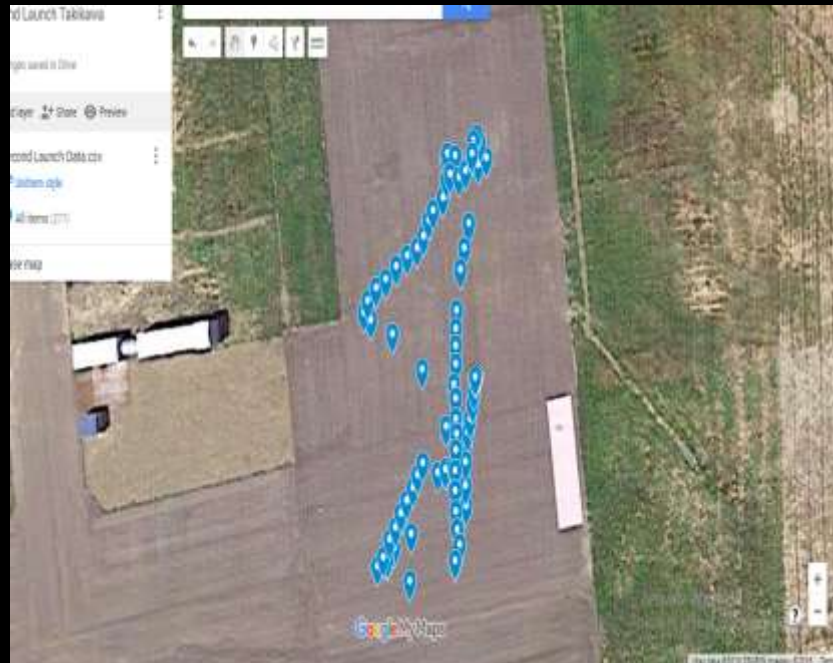
## Temperature data

	A	B	C	D	E	F	G
1		21.4375					
2		21.4375					
3		21.4375					
4		21.4375					
5		21.4375					
6		21.4375					
7		21.5					
8		21.5					
9		21.5					
10		21.4375					
11		21.5					
12		21.5					
13		21.5					
14		21.5					
15		21.5					
16		21.5					
17		21.5					
18		21.5					
19		21.5					
20		21.5					
21		21.5					
22		21.5					
23		21.5625					

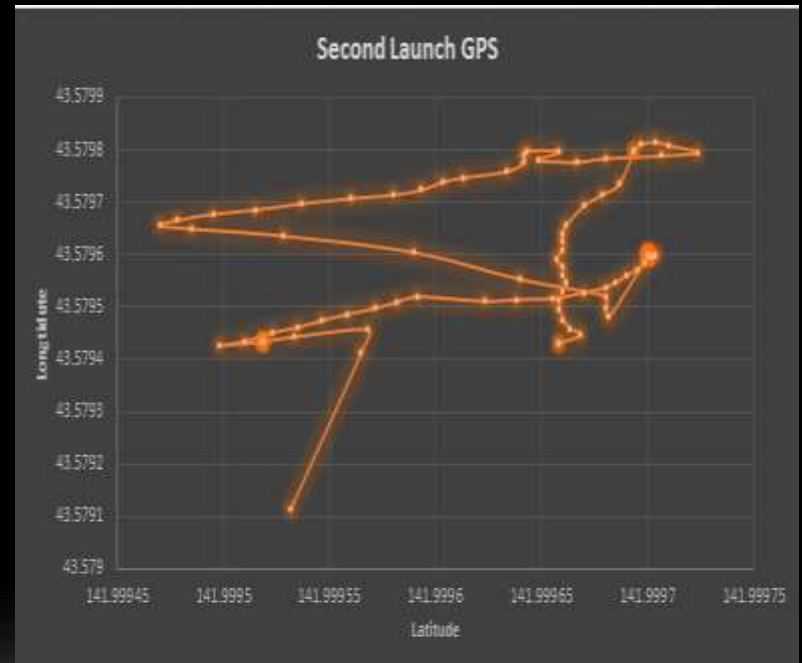


# SECOND LAUNCH

## GPS



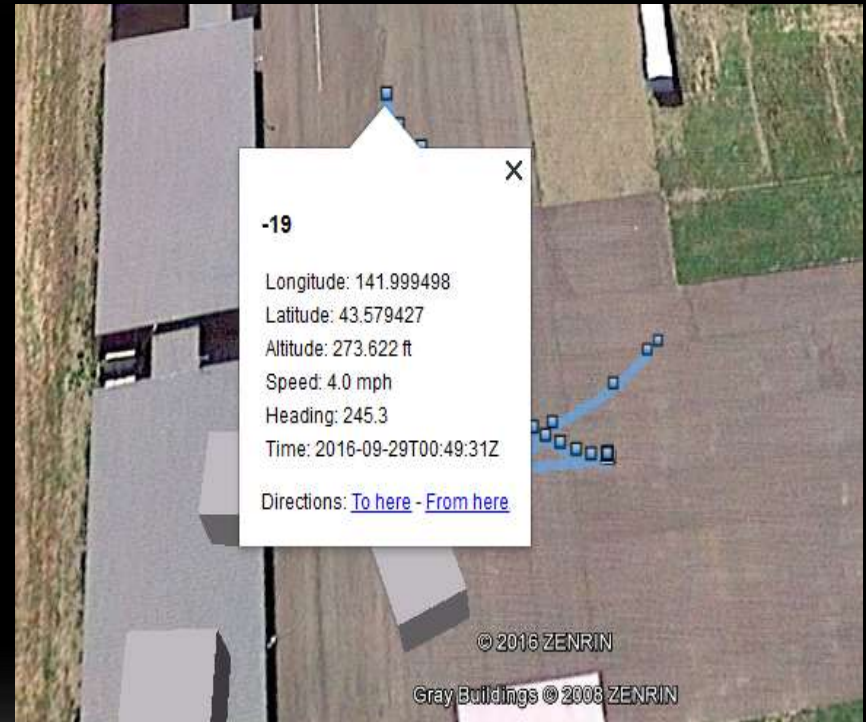
## GPS Data





# SECOND LAUNCH

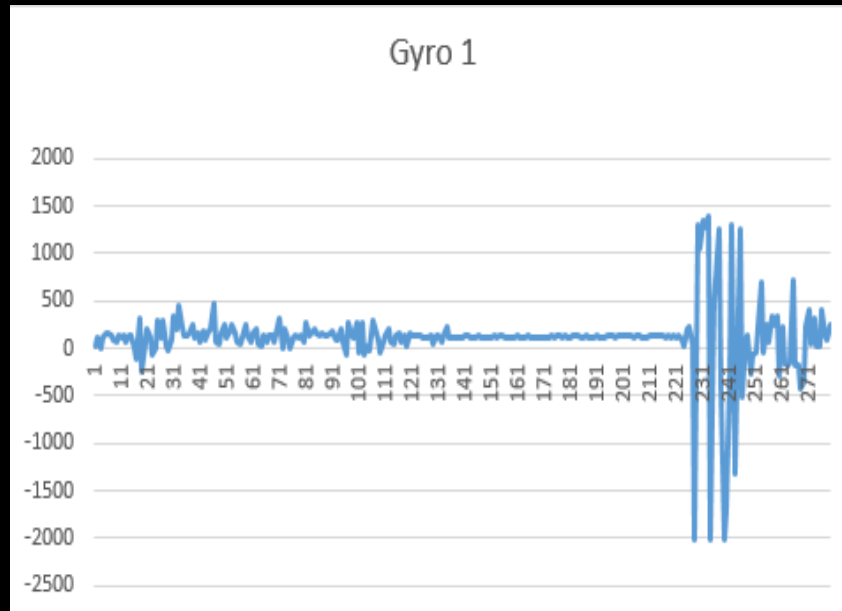
- GPS



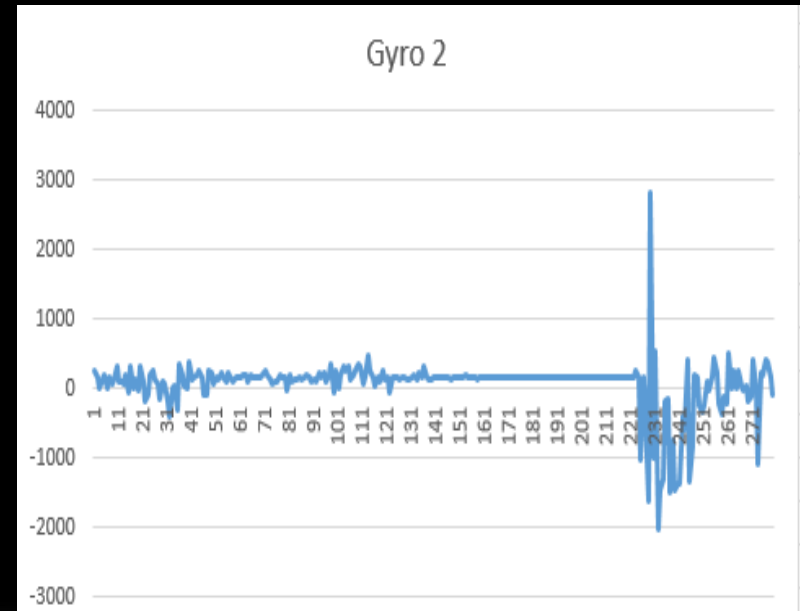


# SECOND LAUNCH

Gyro 1



Gyro 2

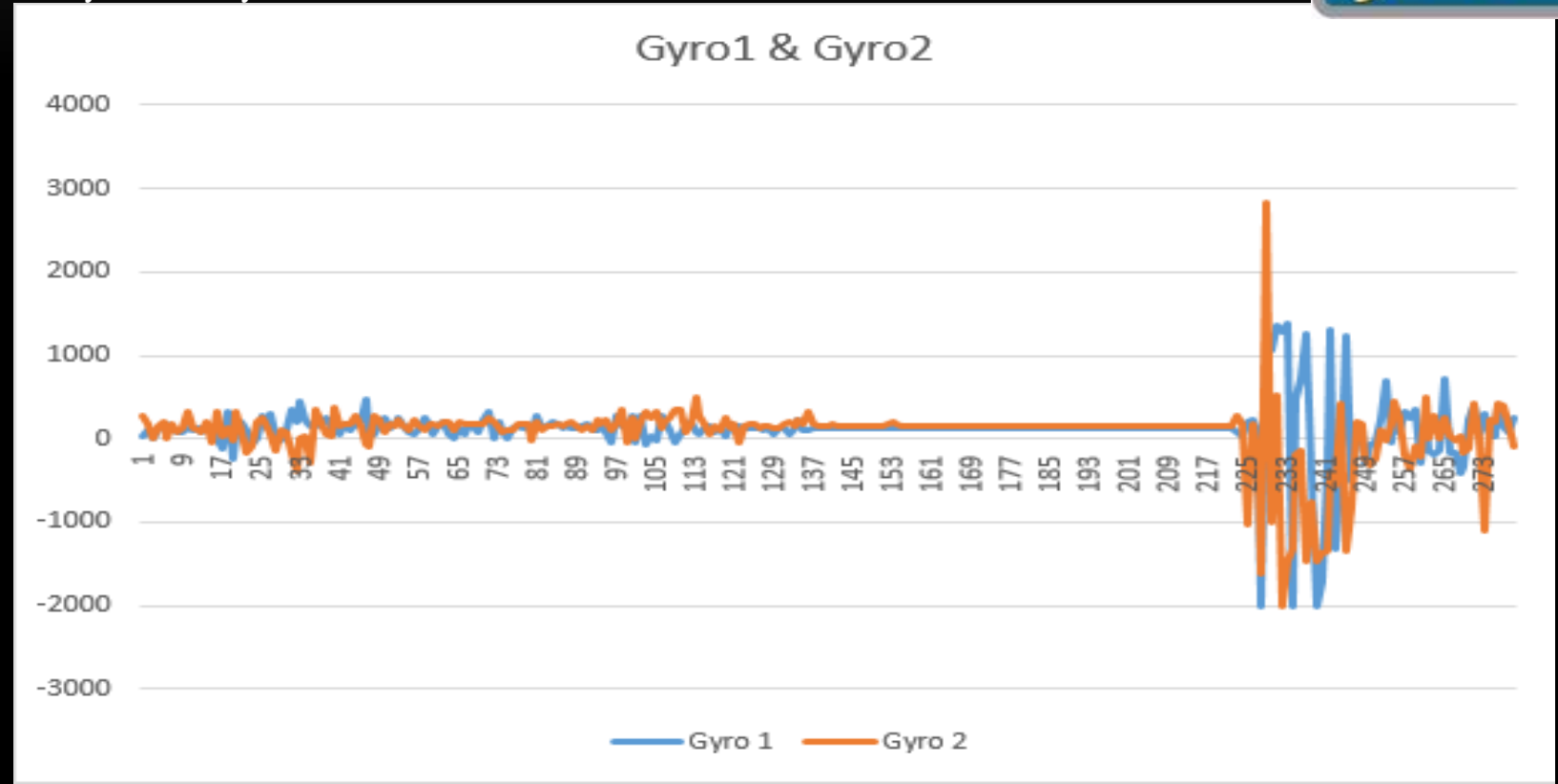






# SECOND LAUNCH

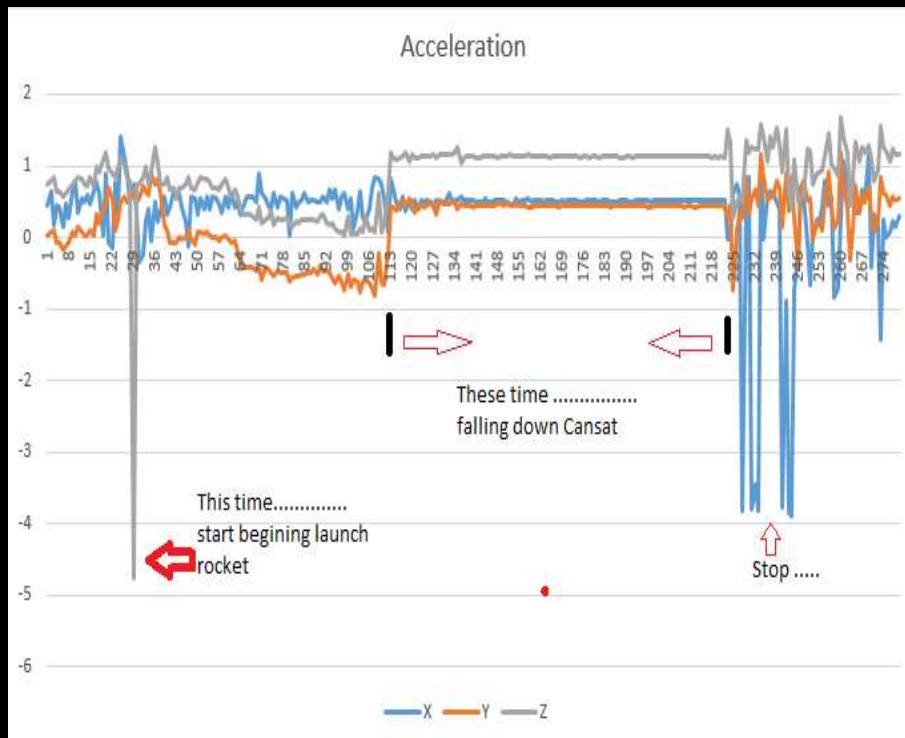
- Gyro 1 & Gyro 2





# SECOND LAUNCH

## Accelerometer



## Accelerometer Data

0.451613	0.032258	0.752688		
0.645161	0.064516	0.784946		
0.182796	0.096774	0.827957		
0.451613	-0.07527	0.645161		
0.430108	-0.06452	0.645161		
0.16129	-0.17204	0.55914		
0.473118	-0.11828	0.612903		
0.268817	-0.07527	0.677419		
0.645161	0.064516	0.731183		
0.784946	0.032258	0.784946		
0.354839	0.139785	0.827957		
0.537634	0.064516	0.806452		
0.483871	0.021505	0.741935		
0.591398	0.032258	0.709677		
0.462366	0.107527	0.83871		
0.645161	0.032258	0.709677		
0.763441	0.311828	0.989247		
0.623656	0.204301	0.913978		
0.032258	0.397849	1.096774		
0.88172	0.462366	1.182796		
-0.07527	0.698925	0.967742		
-0.13978	0.548387	0.88172		
0.763441	0.107527	0.827957		
0.268817	0.07527	0.677419		

# SECOND LAUNCH

Camera





# THANK YOU

HOKKAIDO UNIVERSITY AND ALL PROFESSORS FROM UNIVERSITIES  
TEACHING ASSISTANCE

ALL PARTICIPANTS AND UE COMPANY